

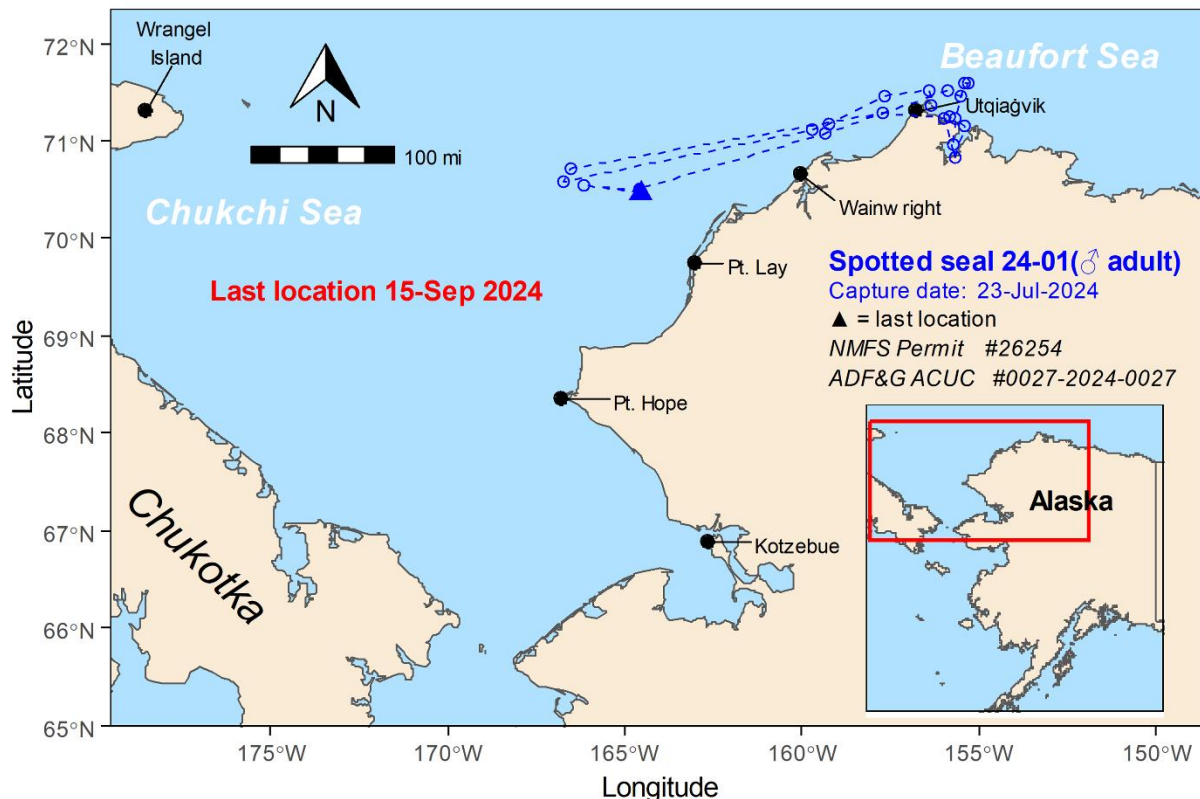


C. Reichmuth
NMFS # 18902

ICE SEAL LOCATIONS as of 22-October-2024

The following maps plot the movements of seven spotted seals (*Phoca largha*) captured in the vicinity of Utqiagvik, AK and instrumented with satellite tracking devices. Tracks shown are filtered to show daily locations. This work was paid for in part with National Petroleum Reserve-Alaska Program funds (NPR-A grants #20-NPRA-06 and #22-NPRA-06) made available through the State Department of Commerce, Community, and Economic Development. Additional funds were provided by the Community Directed Funding Program (Prog. #NA23NMF4690288) made available through the National Oceanic and Atmospheric Administration. All 2024-25 NSB ice seal research falls under NMFS permit #26254, ADF&G Animal Care and Use Committee Protocol #0027-2024-0027, and in cooperation with the [Ice Seal Committee](#) and the [NSB Fish & Game Management Committee](#). Thankyou to Dr. Colleen Reichmuth for the spotted seal photo.

For more information visit www.north-slope.org, or email: andrew.vonduyke@north-slope.org.

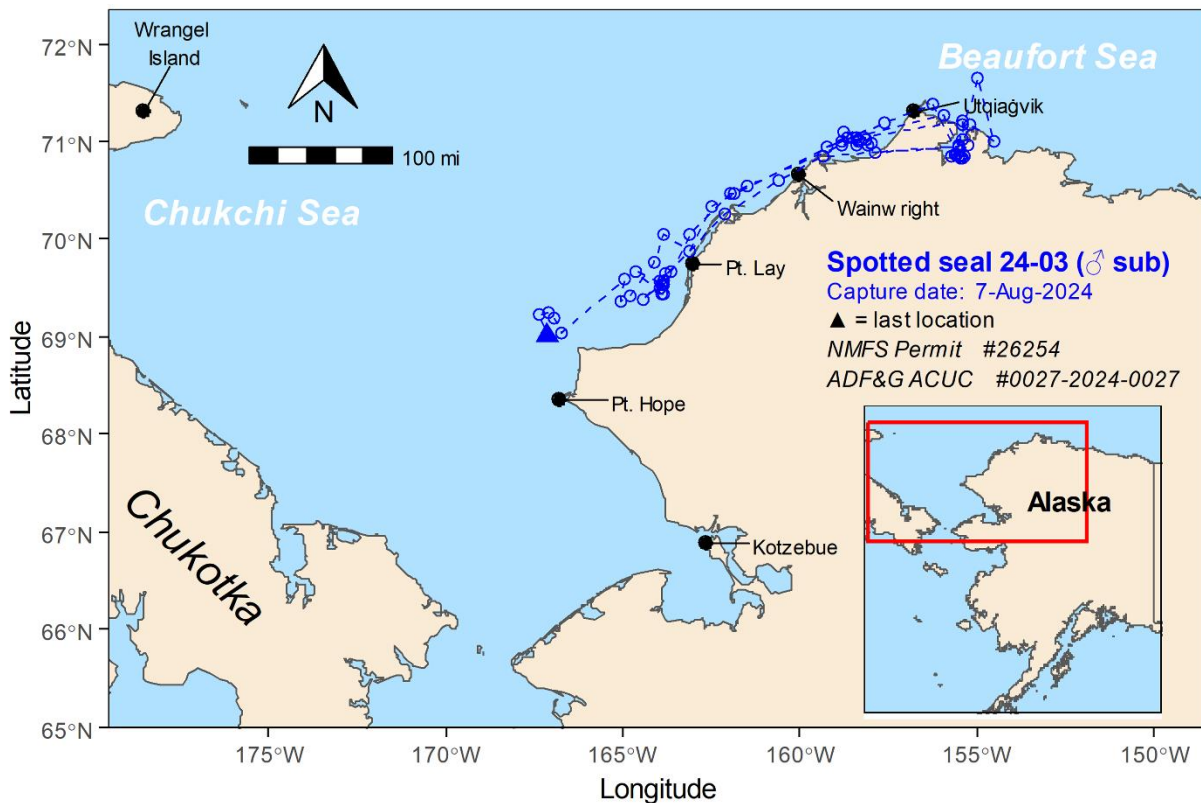
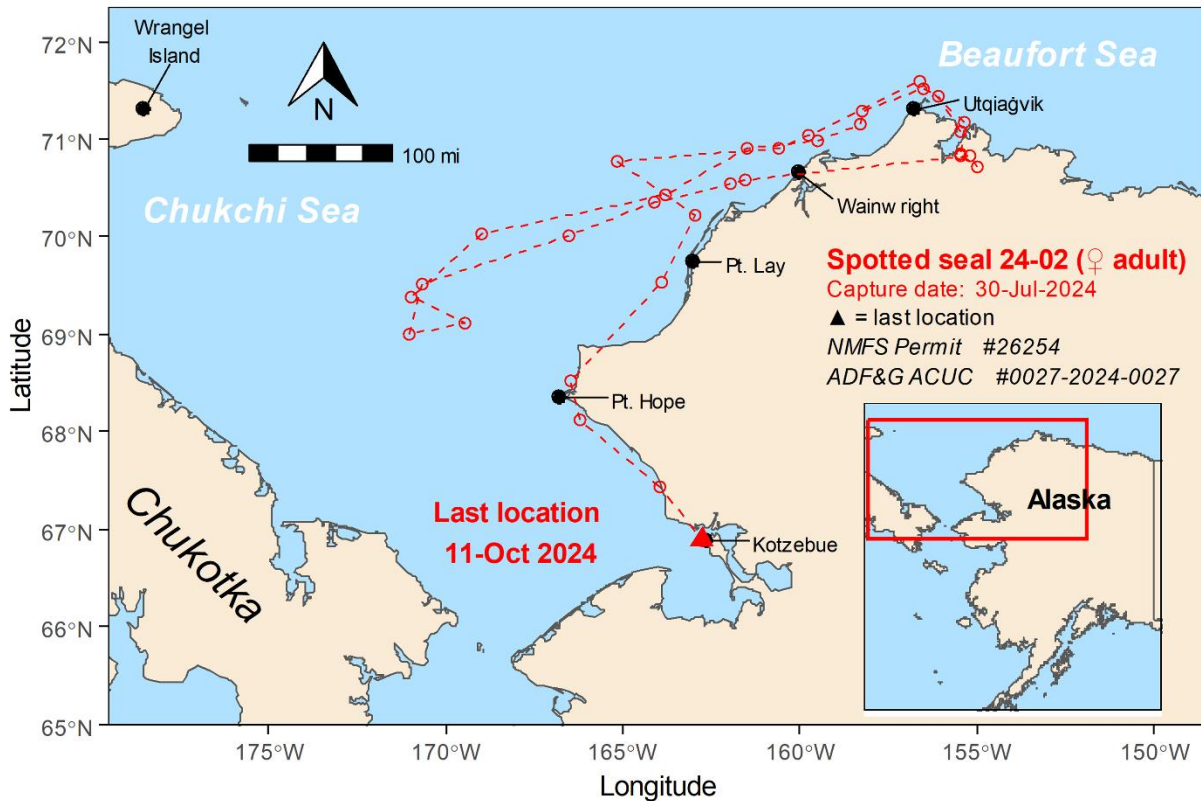




NORTH SLOPE BOROUGH

Department of Wildlife Management

Map 2024-25_#04
Ice Seal Baseline Study



Contact

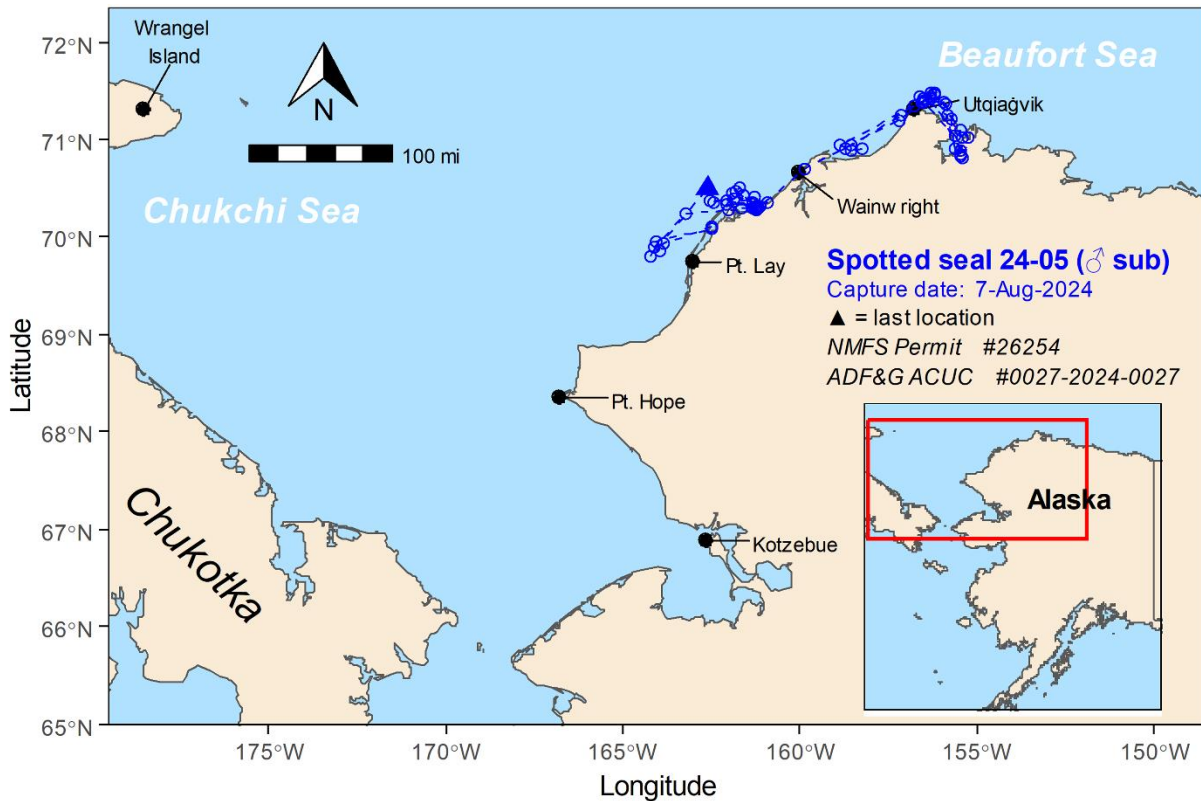
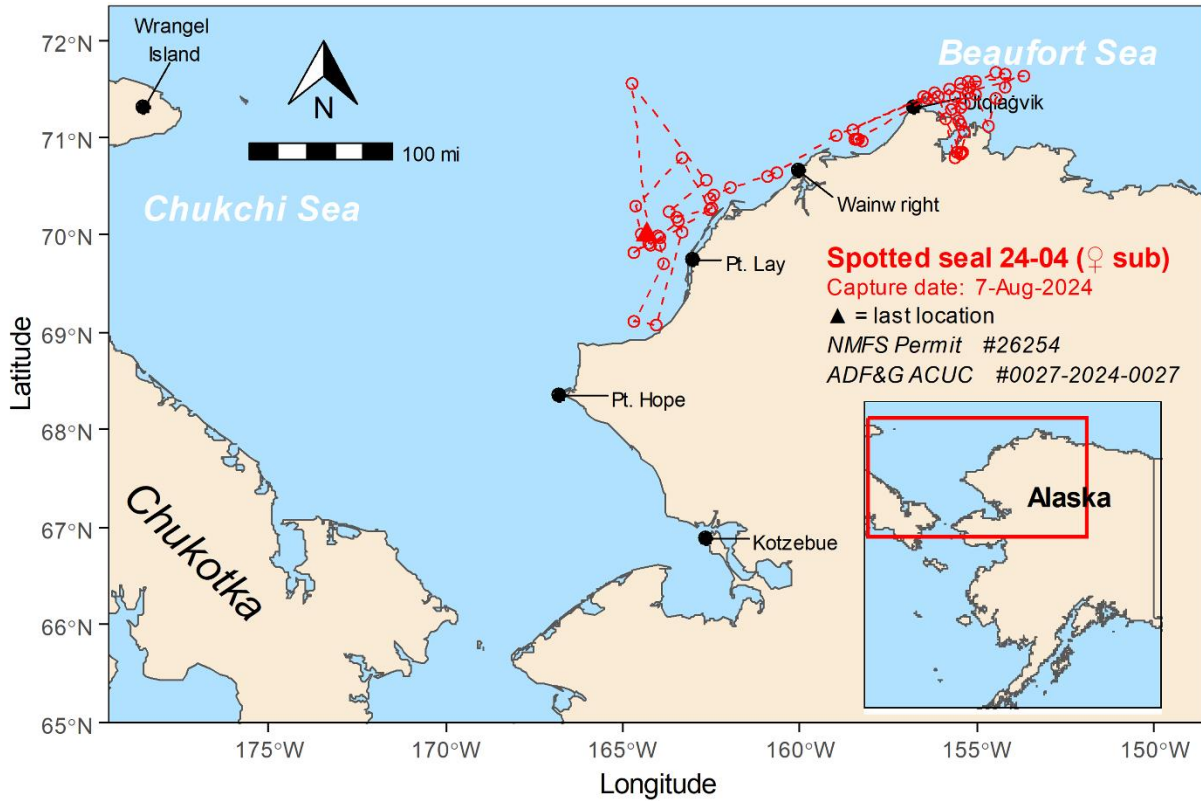
Andy Von Duyke andrew.vonduyke@north-slope.org
Wildlife Biologist 907-852-0350



NORTH SLOPE BOROUGH

Department of Wildlife Management

Map 2024-25_#04
Ice Seal Baseline Study



Contact

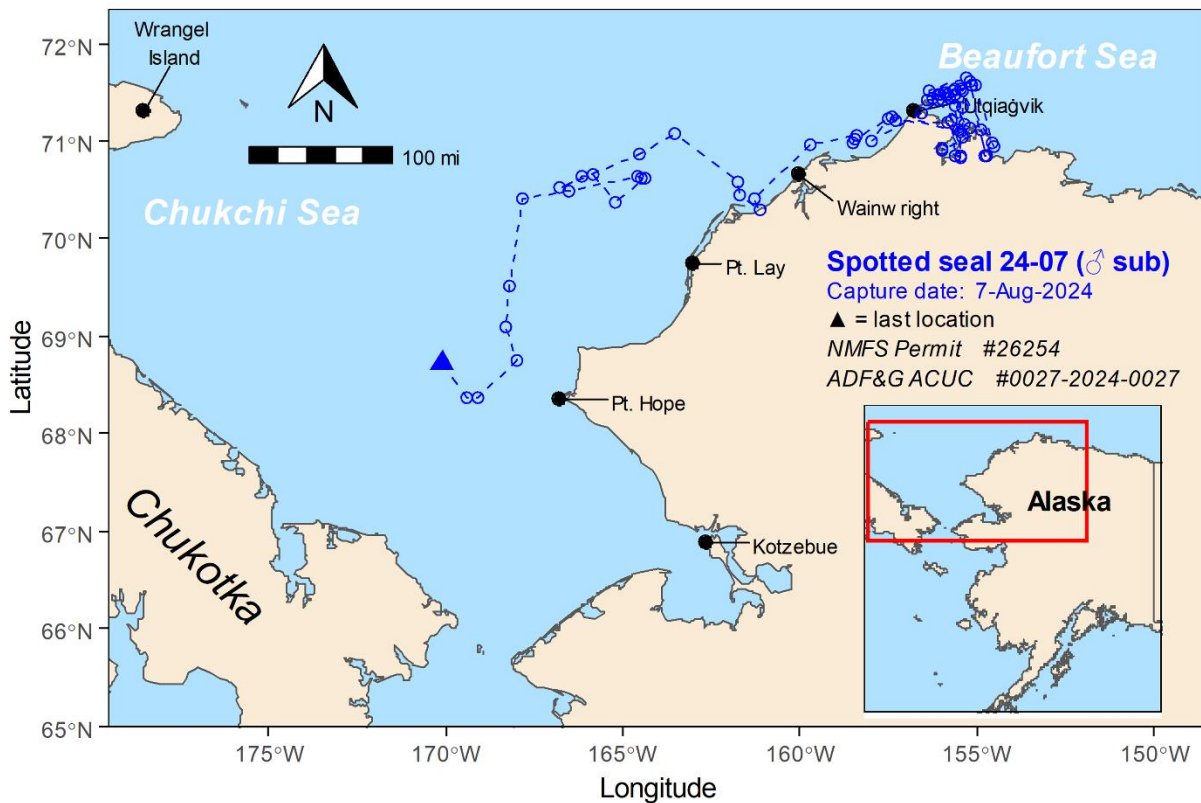
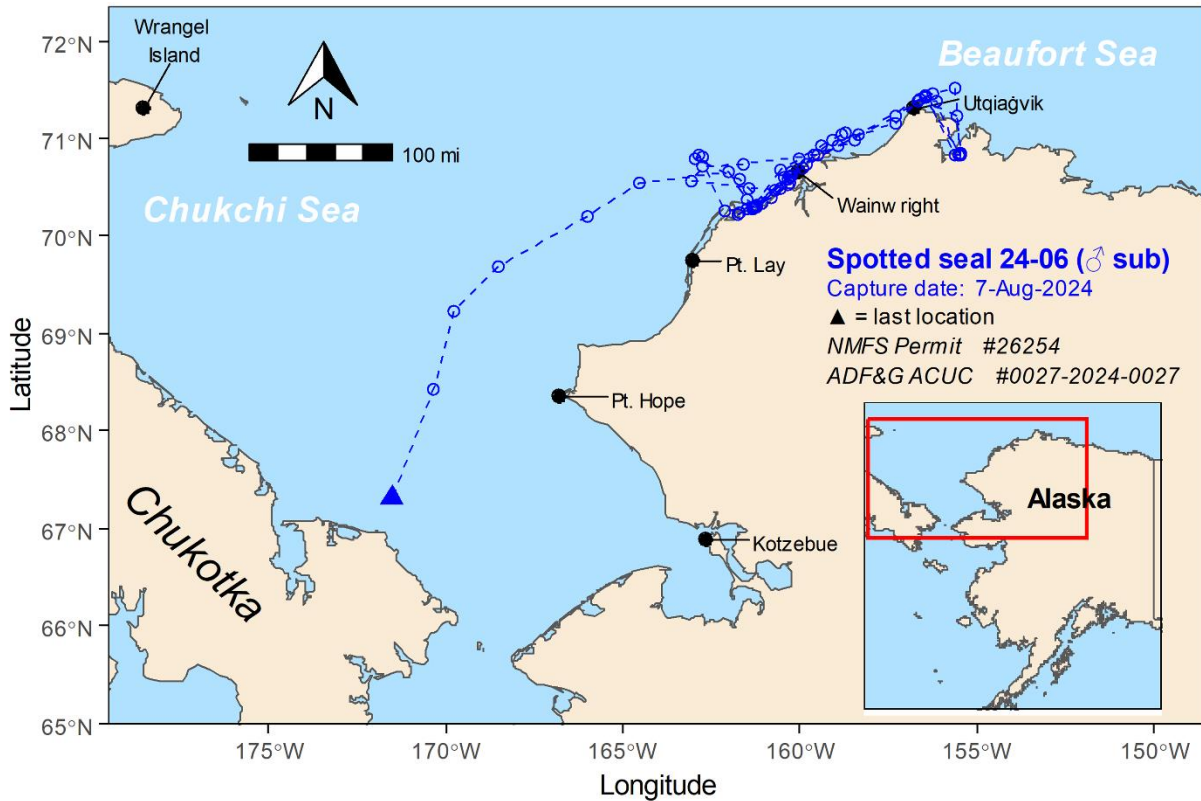
Andy Von Duyke andrew.vonduyke@north-slope.org
 Wildlife Biologist 907-852-0350



NORTH SLOPE BOROUGH

Department of Wildlife Management

Map 2024-25_#04
Ice Seal Baseline Study



Contact

Andy Von Duyke andrew.vonduyke@north-slope.org
Wildlife Biologist 907-852-0350